

# SHOULD I SPRAY FOR SOYBEAN APHIDS?

Treat when field average is **250 APHIDS/PLANT** and populations are **ACTIVELY INCREASING**

A **MINIMUM OF TWO FIELD VISITS** are required to determine if aphid populations are increasing. To calculate a field average, count the number of aphids on **20-30 PLANTS/FIELD**.

Begin field scouting in late June, making one or two visits/field/week. Continue scouting until aphid populations decline, usually mid to late August.

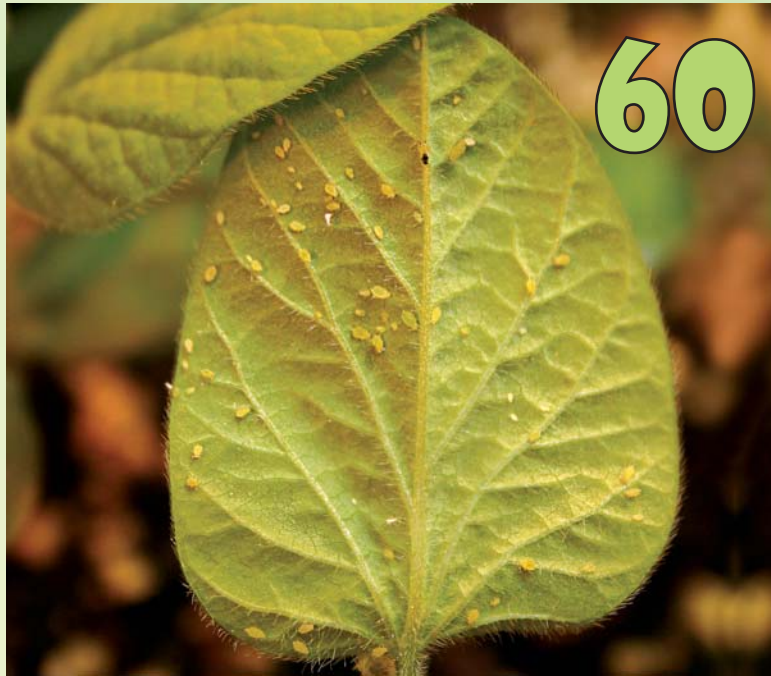
Soybean aphids in various sizes, colors, and stages of development.



(Do not count the cast skins.)

## OPEN FOR A VISUAL GUIDE TO COUNTING APHIDS...

## A VISUAL GUIDE TO NUMBER OF SOYBEAN APHIDS PER LEAFLET



Soybean aphid count will vary from leaflet to leaflet. Add up the total number of aphids on the entire plant, not on a single leaflet. To calculate a field average, count the number of aphids on **20-30 PLANTS/FIELD**.



# WOULD IT PAY TO SPRAY FOR SOYBEAN APHIDS?

Sound management requires accurate field scouting and soybean aphid economic threshold information. The following guidelines, based on crop growth stage, should help determine if a treatment will be **profitable**.

- **Emergence to mid-vegetative stages:** Economic benefit from insecticide application is unlikely.
- **Late-vegetative to R4 (3/4-inch pod):** Treat when the field average is **250 APHIDS/PLANT** and populations are **ACTIVELY INCREASING**.
- **Beginning seed (R5):** Thresholds at this crop stage has not been established. However, actively increasing populations greater than 250 aphids/plant may require treatment.
- **Full Seed (R6) to Maturity (R8):** Economic benefit from insecticide application is very unlikely.



*Nutrient and Pest Management Program (NPM)  
Integrated Pest Management Program  
University of Wisconsin-Extension, UW-Madison*

For more information on pest management, or for additional copies of this card, contact the NPM program at 608-265-2660, on the web at <http://ipcm.wisc.edu> or by mail at 1575 Linden Drive, Madison, WI, 53706. Before publicizing, please call for publication availability.